

Domestic Violence During Pregnancy

Michelle Donnelly - Service Manager

Clare Stewart - Coordinator CYPS

Hull Women's Aid





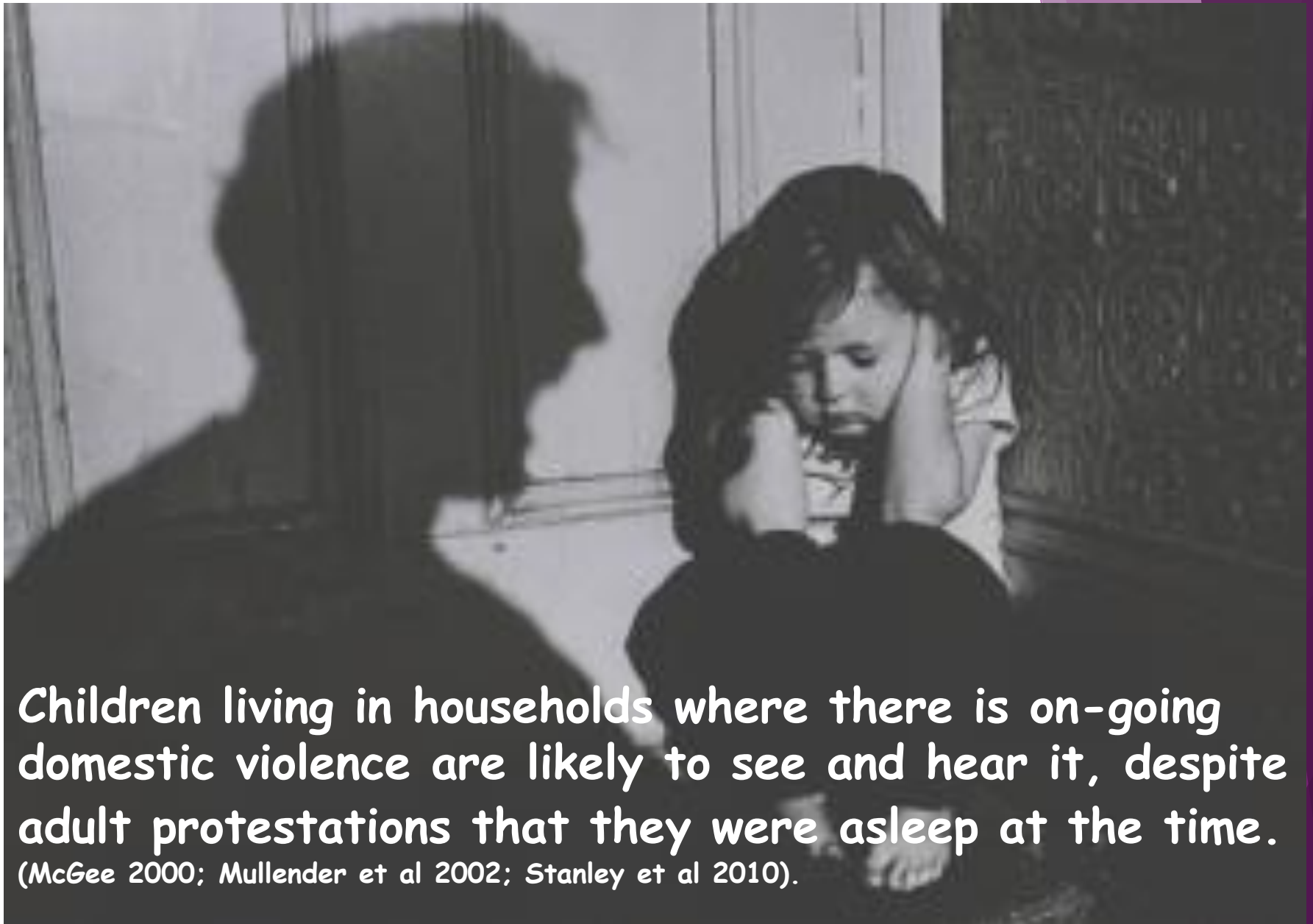
Approximately 130,000 children are currently living with Domestic abuse.

(CAADA, 2012).

18,486

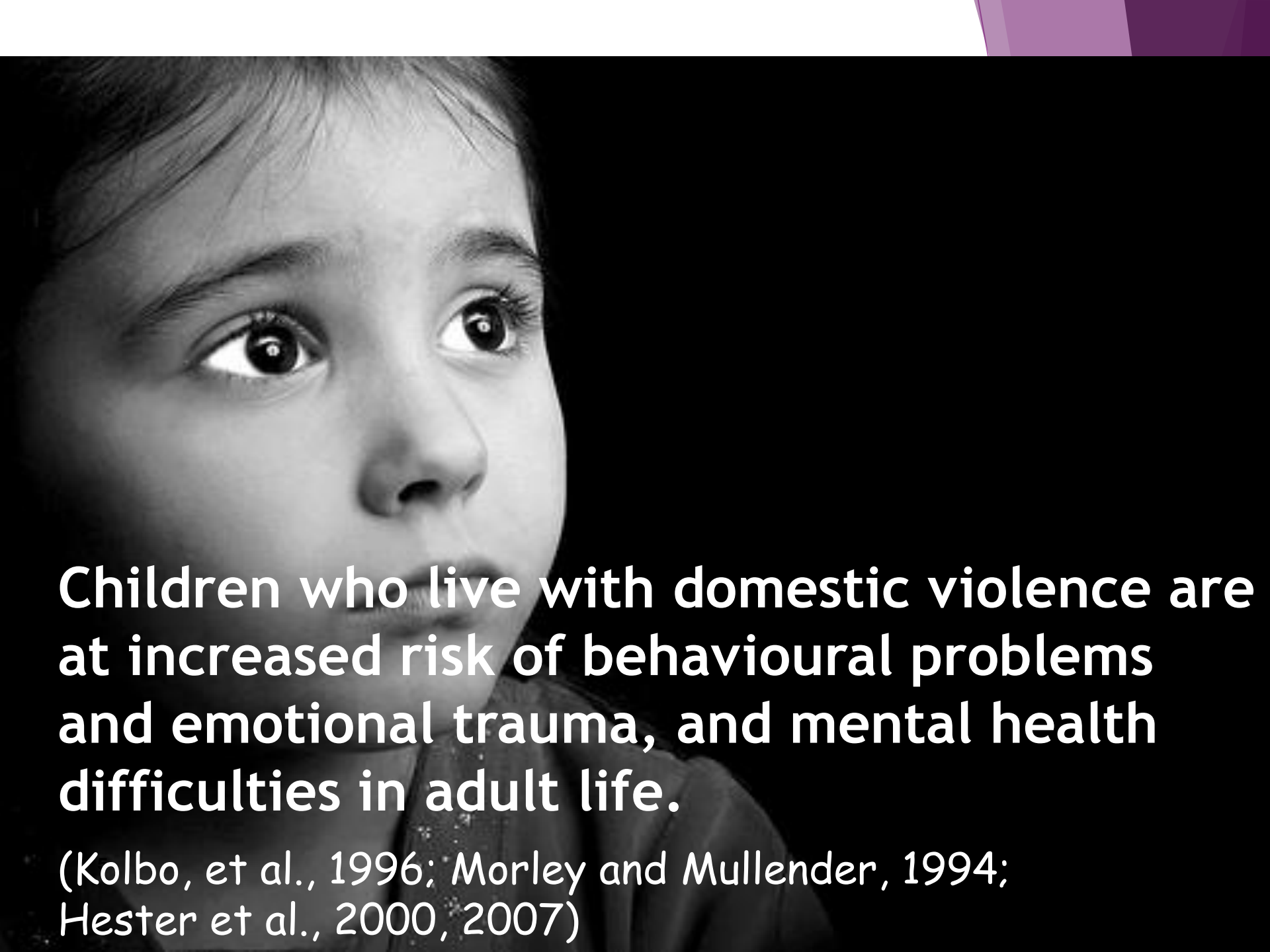
children and young people experience
domestic abuse in hull, each year





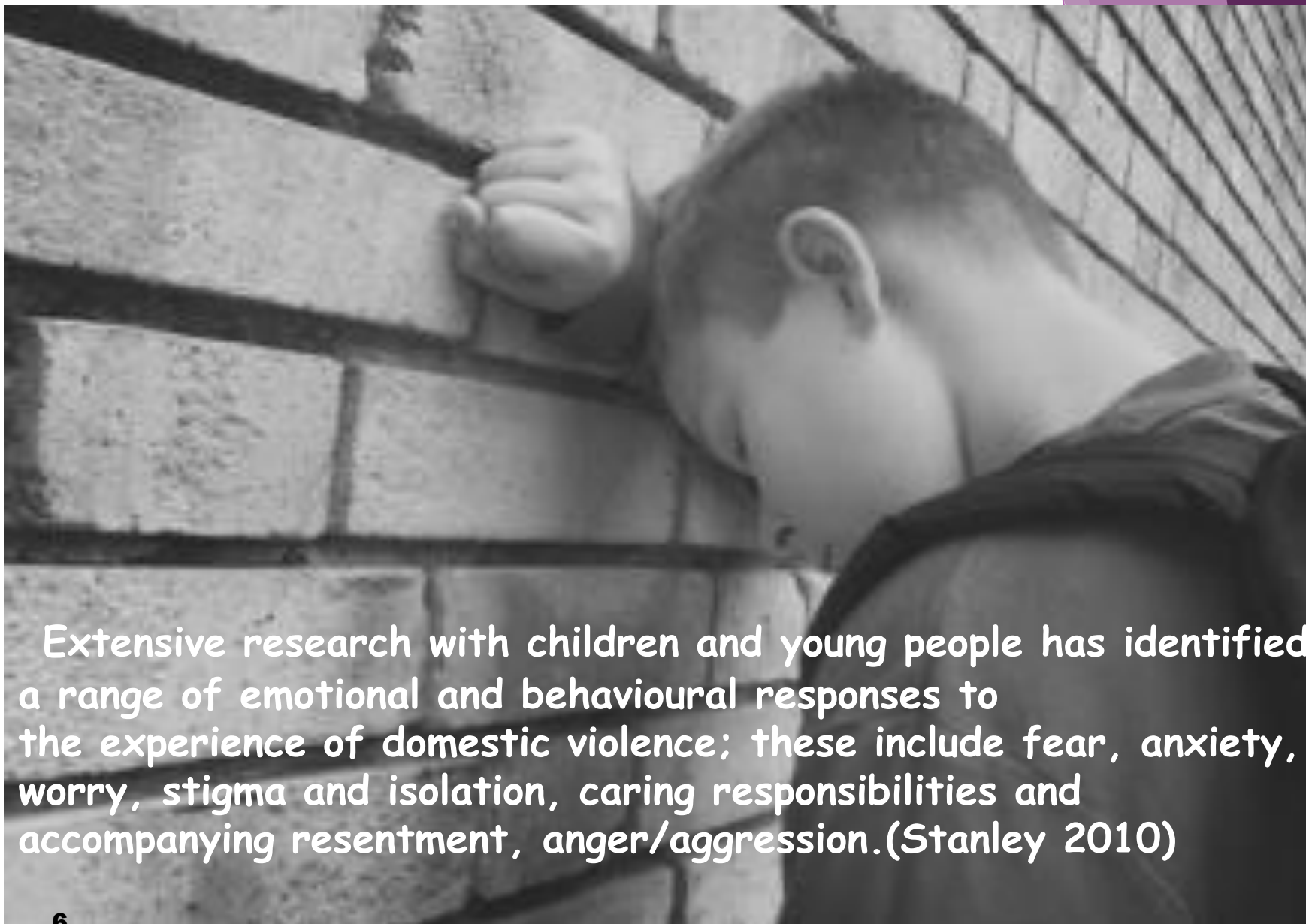
Children living in households where there is on-going domestic violence are likely to see and hear it, despite adult protestations that they were asleep at the time.

(McGee 2000; Mullender et al 2002; Stanley et al 2010).



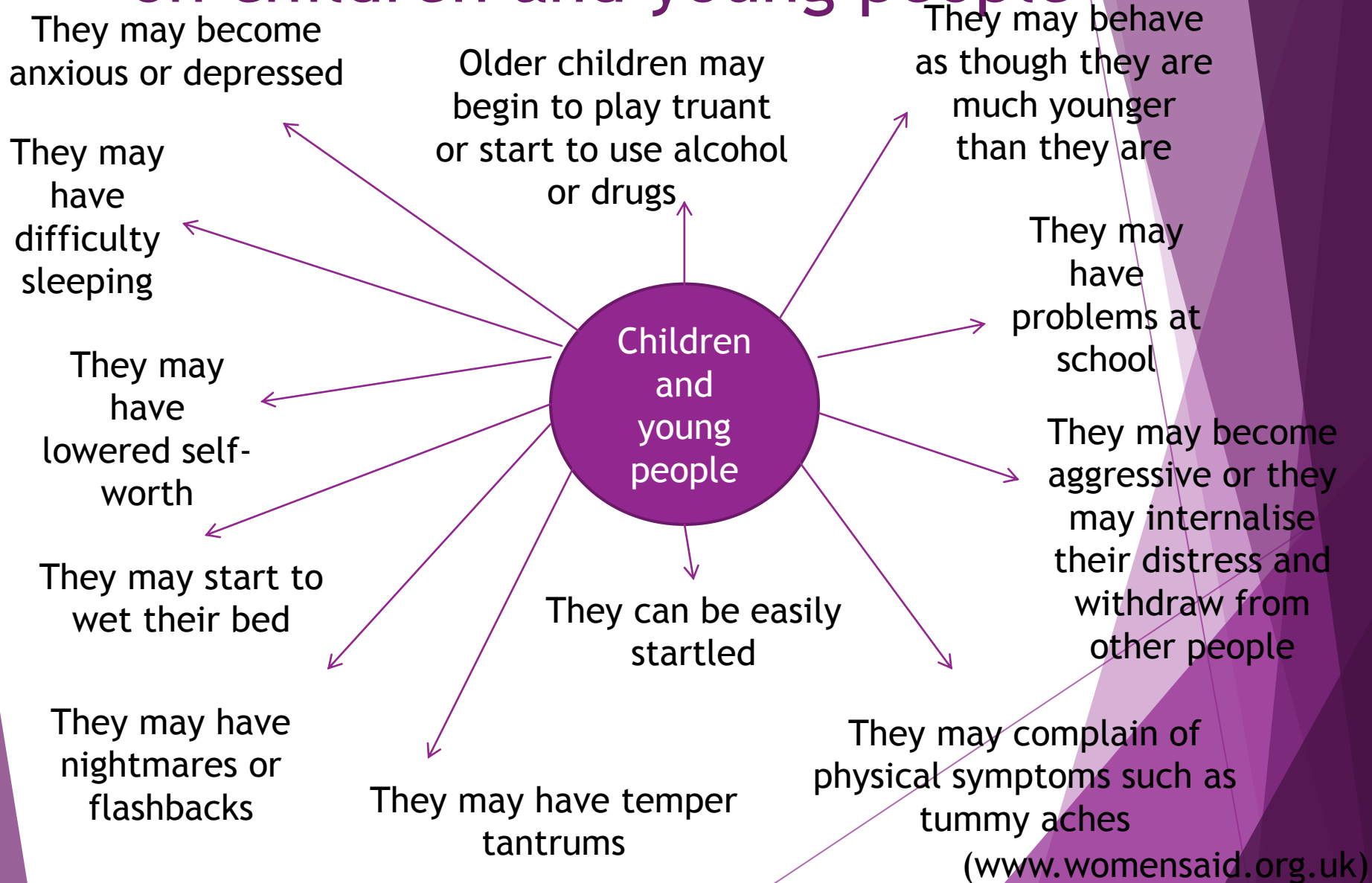
Children who live with domestic violence are at increased risk of behavioural problems and emotional trauma, and mental health difficulties in adult life.

(Kolbo, et al., 1996; Morley and Mullender, 1994; Hester et al., 2000, 2007)



Extensive research with children and young people has identified a range of emotional and behavioural responses to the experience of domestic violence; these include fear, anxiety, worry, stigma and isolation, caring responsibilities and accompanying resentment, anger/aggression.(Stanley 2010)

Domestic abuse and the effects on children and young people



Hull Women's Aid Children's Service

- ▶ Tel: 01482 474133
- ▶ Email: childservices@hullwomensaid.org
- ▶ Website: www.hullwomensaid.org

Thank you for your time

